

Exact MAX

# MATERIAL REQUIREMENTS PLANNING



**Exact Max Material Requirements Planning (MRP) balances the supply and demand for all component parts needed to satisfy your master schedule. The MRP process reschedules existing orders to meet changes in current demand and initiates new orders (order signals or planned orders), if required, to balance supply with demand. This module also maintains MRP planning data for parts.**

## Balance even the most complex component part structures with inventory capacities.

1. Management by exception
2. Paperless planning
3. Selective MRP
4. Graphical planning tools
5. Bulk order approval
6. Online inquiries
7. Context sensitive help

### Perform selective MRP

- Run MRP on specific parts, planners, commodity codes or user-definable preferences.
- Calculate component requirements with net change or regenerative explosion logic.
- Define a firm planned "time fence" to control orders within a user-defined planning horizon and prevent rescheduling, expediting, or de-expediting of already released orders.
- Examine data for each component before suggesting new orders, including quantity onhand, existing scheduled receipts, manufacturing or purchasing lead-times and due dates of the order.
- Automatically calculate due dates for components parts using "backward scheduling", making sure you get the right parts at the right time.
- Plan parts using re-order point logic or standard MRP order policies such as lot-for-lot and weekly.

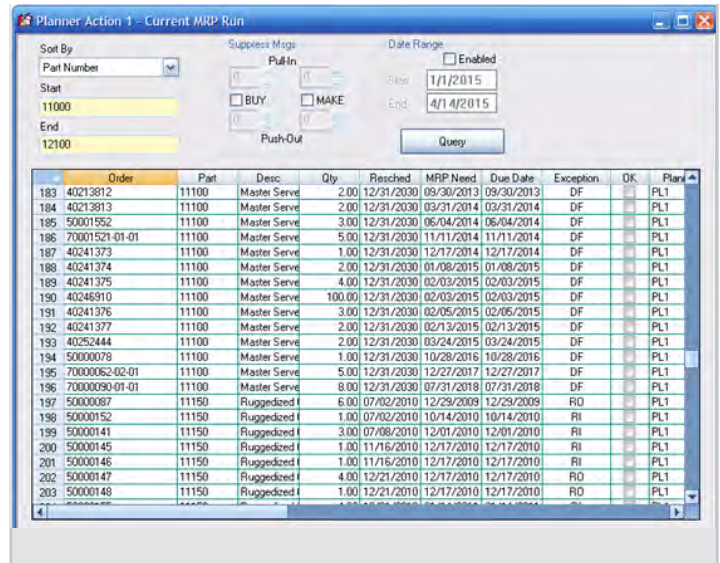
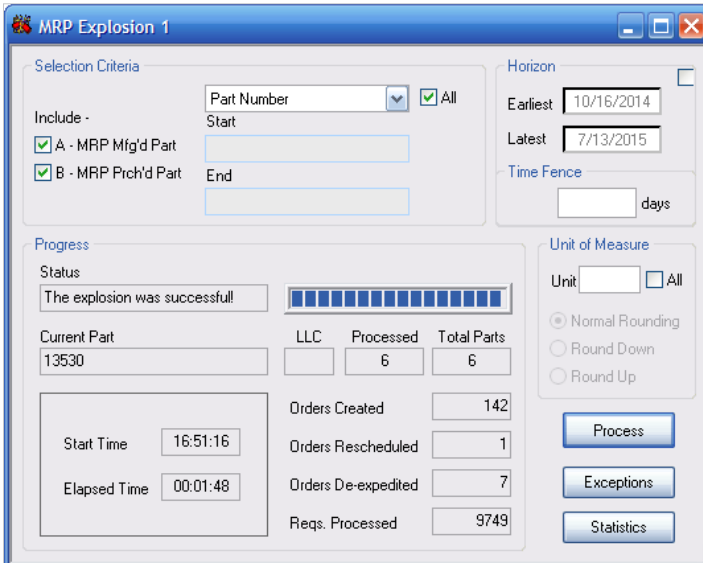
- Use phantom logic to control "build through" assemblies.

### Prioritize issues that you control

- Displays items that require attention after an MRP run in an easy to use spreadsheet format (supply and demand is out of balance).
- Over 10 exception messages identify parts that need immediate attention.
- Exception filters allow planners to concentrate on the most critical problems first, eliminating overwhelming amounts of data.
- Clearly mark items as being resolved so they don't have to be viewed again.
- Quickly drill-down on an item bringing you to the MRP Detail for that part.
- User preferences allow the grid to be customized to show desired information for a particular user.

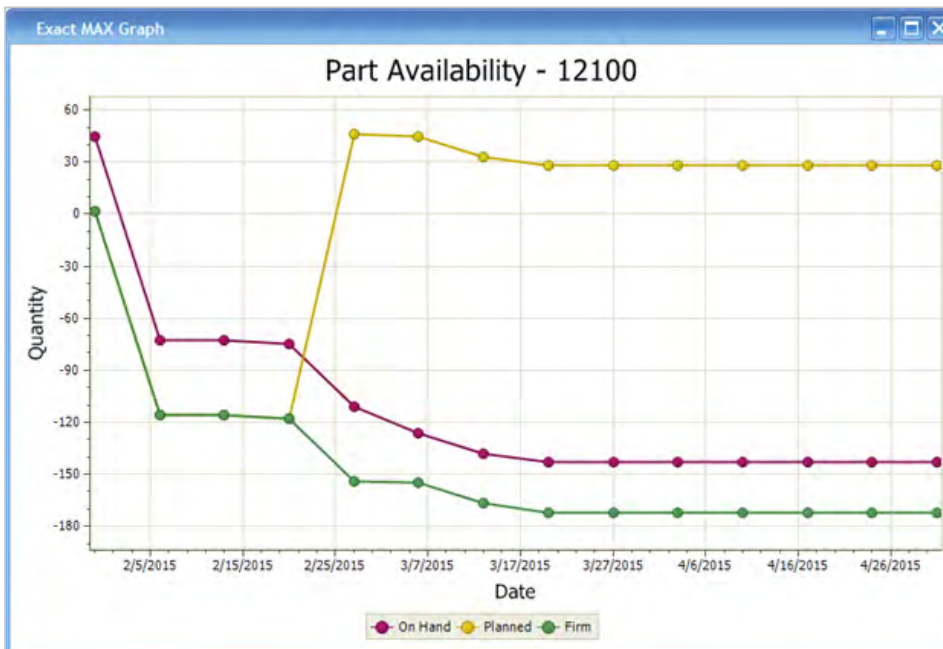
### Don't get swamped in MRP output

- View entire time-phased supply and demand picture for a part.
- Alert planners to actions required to prevent shortages using color-coded projected available alerts.
- Color-coded projected available alerts the planner to actions required to prevent shortages.
- Validate demand through single or multi-level pegging to the parent order.
- Double-click the supply order to maintain shop and purchase orders.



> Respond quickly to changes in supply and demand while improving delivery schedules.

> Quickly identify problems with the plan and make changes to balance supply with demand.



> Graphically view projected on hand and projected available differentiating between planned and firm orders.

- View the plan based on what's happening today, using extensive sort and filtering capabilities.
- Adjust the plan real-time through multiple levels without re-running MRP.
- Maintain MRP planning data.

**Edit and approve orders in real time**

- Maintain orders on-line and immediately see the effect of the changes.
- Automatically reschedule order due dates based on supply and demand balances.
- "Freeze" (firm plan) the date of any order with a click of the mouse.
- Display both manufactured and purchased parts.
- Approve planned orders to either manufacture or purchase any parts (make/buy decisions).
- Bulk order approval allows you to approve groups of orders together rather than one at a time, saving valuable input time.