

Exact MAX

INVENTORY CONTROL

Track and maintain inventory balances for each part you stock.



Increase inventory turnover and improve inventory accuracy. Inventory Control is one of the foundation modules on which the Exact MAX system is built. It enables you to track and maintain inventory balances for each part you stock, including finished goods, assemblies, component parts and raw materials — so you'll always know where your inventory is located and how many parts are on hand. This higher level of control and visibility will result in increased inventory turnover and improved inventory accuracy.

Benefits

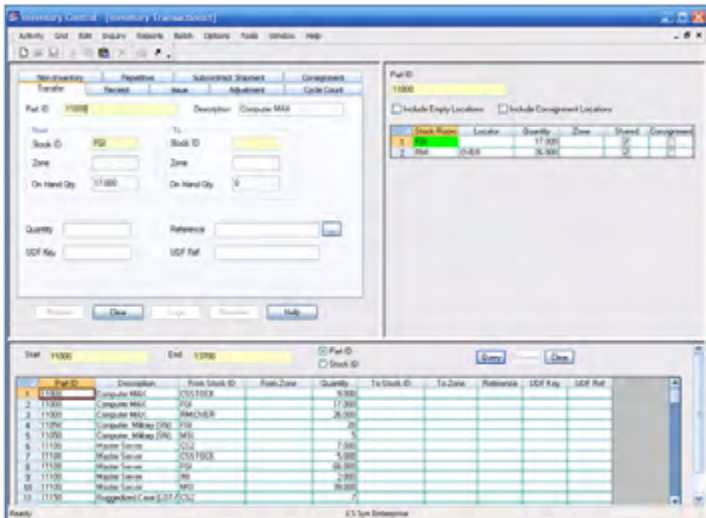
- Store a complete transaction history
- Track customers
- Manage invoices
- Print statements
- Conduct detailed customer inquiries
- Process efficient cash receipt
- Analyze customer activity

Multi-Record Processing — Real Productivity Gains

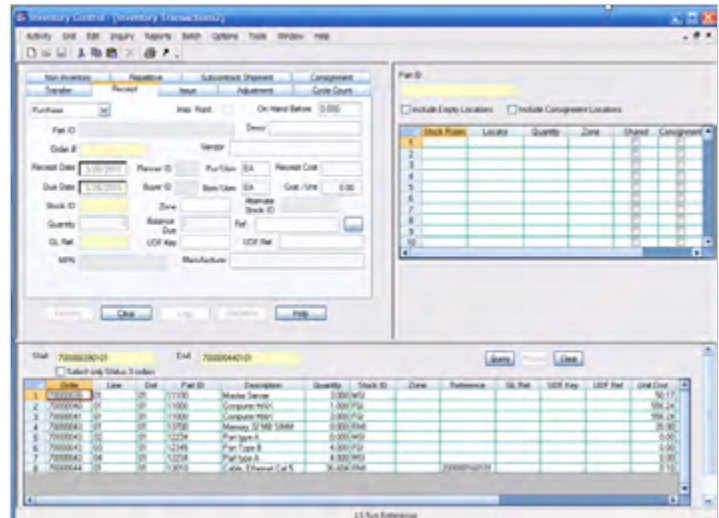
- Save time on all transactions by processing more than one record simultaneously.
- View all inventory transaction records in a spreadsheet grid and customize the layout of the grid, based on user preference.
- Cut & paste grid contents to any Windows application.
- Populate the grid, using only the information you want, with extensive sort and filtering capabilities.
- Issue all components to an order in bulk, rather than one at a time, saving valuable entry time.
- Give users access to only the transactions they need to do their job.

Inventory Transactions — Everything From the Desktop

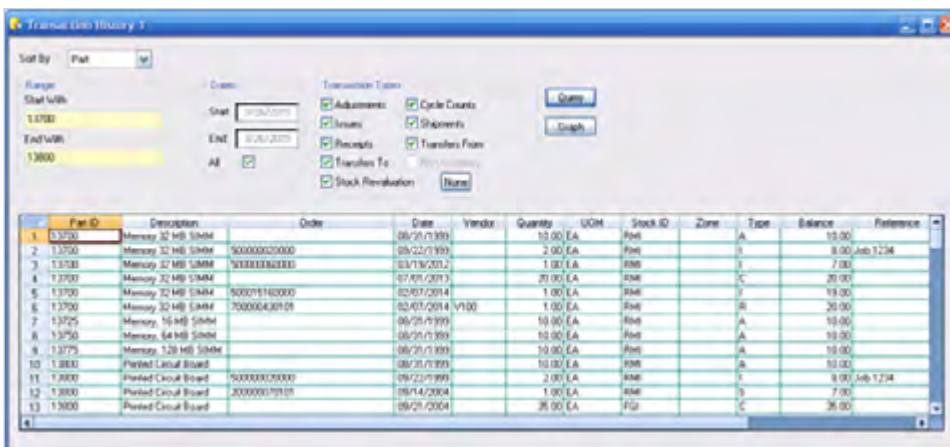
- Stay organized with instant online entry of receipts, issues, cycle counts, transfers, shipments and adjustments.
- Use cycle count logic for inventory accuracy improvements.
- Access all inventory transactions with the click of a button using a tab dialogue.
- Define cycle count tolerances in both dollar amounts and in percentages for accurate inventory tracking.
- Maintain separate units of measure for stocking and costing.
- Transfer between stockrooms with one entry.
- Create user-definable stockrooms that are either nettable or non-nettable for MRP.
- Maintain multiple stockrooms per part, multiple parts per stockroom and even multiple stock locations per stockroom.
- Receive and issue both planned and unplanned material.
- Get quickly alerted, via online warning messages, when out-of-tolerance and exception situations occur.
- Optionally issue all components for an order with one transaction.
- Optionally print purchase order receiver documentation.
- Automatically compare all transactions to valid part and stockroom information, eliminating user errors.



> Top panes provide micro-management transaction control of your stock locations.



> Lower pane provides bulk transaction processing capabilities.



> Display the transaction history for parts.

- Quickly make inventory adjustments with one transaction to ensure accurate on-hand information.
- Post the shipment of customer orders, relieving demand and on-hand inventory.
- Optionally support lot/ serial tracking, repetitive manufacturing and transaction load.

Visual Transaction History — A Graphical Audit Trail

- Quickly understand a part's activity without sorting through reams of data.
- See a visual representation of a part's activity over time.
- View a running inventory balance for a part over time.
- View a part's activity by type of transaction and date range.
- Link OLE-enabled graphs with any Windows application for easy creation of management reports and presentations.

Inquiries — Instantly Know Where A Part Is and How It Got There

- Easily display all the parts in a stockroom or all the stockrooms where a part is stored.
- Display transaction history by part or by audit number, allowing quick analysis of parts based on the date and time stamp.